

27 months activity to work closely with Early Adopters on actionable information products/services for a number of key forest parameters

- Develop methodologies in support to Adaptive and Sustainable Forest Management
- Provide innovative actionable information products / indicators and related tools on a number of key forest parameters
- Develop novel EO solutions and address information gaps
- Target the new EU Forest Strategy and other EU regulations
- Contribute to ESA's engagement with GFOI and CEOS

Lead:



Partners:



Financed by:



Country case study: Peruvian Amazon

Country characteristics/needs:

- SERFOR is interested in refining national and stratum-level biomass estimates from the INFFS for national and international reporting, given that the NFI is still in progress and there are important data gaps
- At the same time, they would like to have carbon predictions to replace outdated carbon maps (Asner et al., 2014), which they need for applications such as forest valuation, land-use change authorizations, payment for environmental services, among others. → small area estimation

Data availability (SERFOR)



Ground-based information: NFI data from around 50% of the total target sample within the Amazon



Global open-source EO derived products (e.g., CCI biomass map)

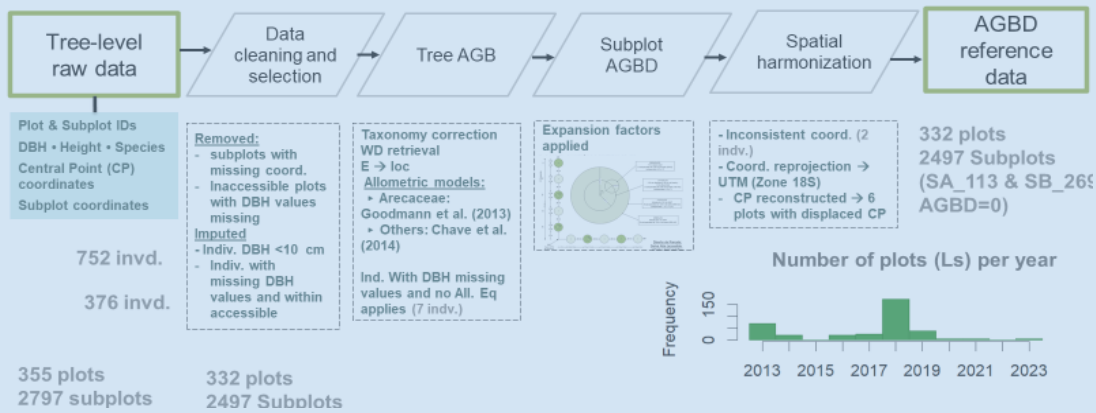


Relevant country layers (e.g., Stratification layer, forest mask, etc..) as other ancillary data

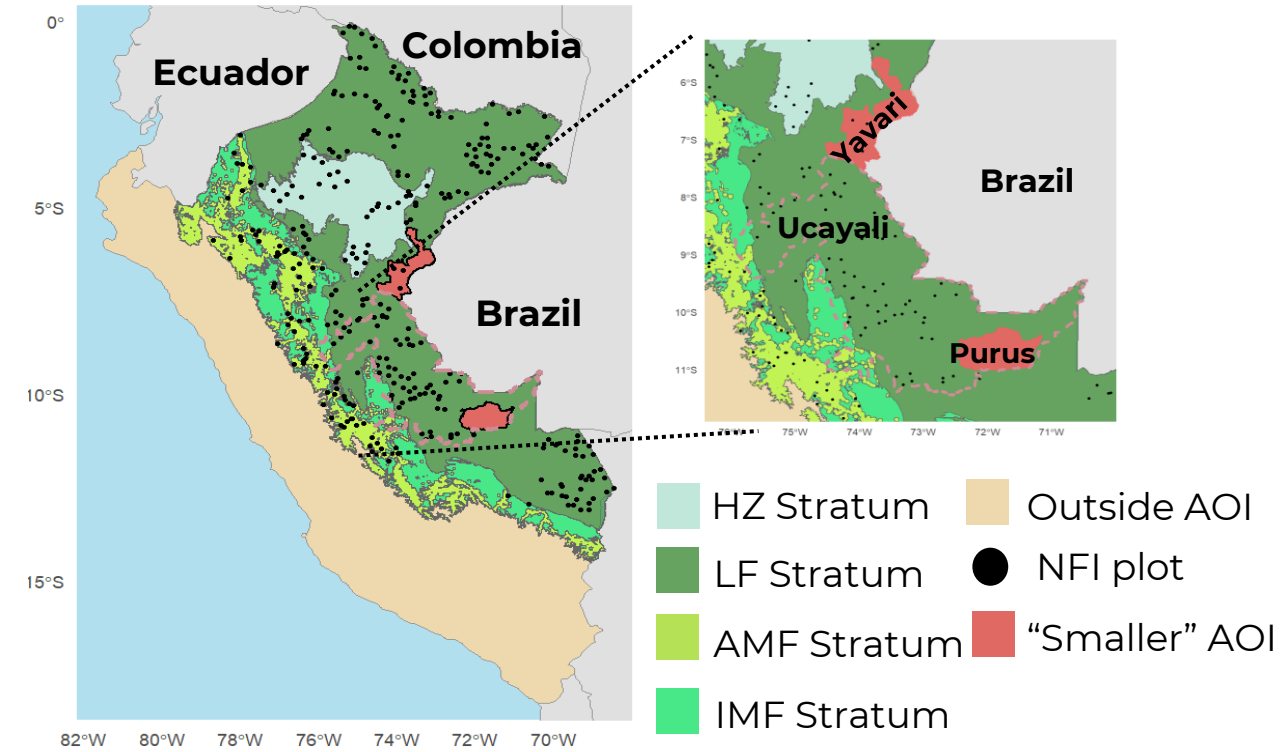
Methodological approach

DESIGN-BASED

Pipeline for pre-processing the reference data



STUDY AREA



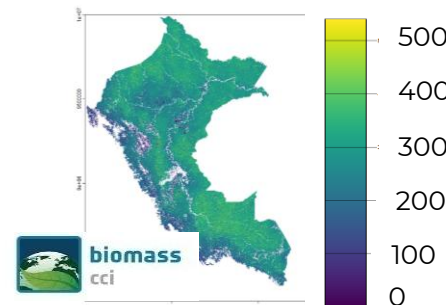
Introducing EO biomass products as auxiliary information:

Málaga et al., in prep.

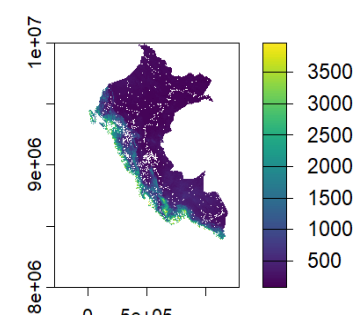
MODEL-ASSISTED

MODEL-BASED

CCI Biomass map



Copernicus GLO-90 DEM



Human footprint



Case study: Brazil



biomass
cci



- Assessing systematic map errors in global biomass products at continental and local scales.

